

Graff Cattle

Ogallala

Registered Angus
& Angus Composites



308-289-5841
308-284-2444

Bull Sale

February 2nd, 2008

Saturday, 1 p.m. MST

Ogallala, NE



Welcome to Graff Cattle,

Thank you for your interest in the past, present and future. Bull sales to commercial cattle producers have been our mainstay for 34 years of which 24 have been here at Ogallala in the bull business. Technological advancements in cattle breeding have taken place in this time frame, but the first considerations are still basic in bull selection and remain the same:

- *Structural soundness - traveling the breeding pastures for years of service**
- *Fertility tied with structural soundness is a must!**
- *Adequate calving ease**
- *Maternal traits to stay in business year after year**
- *Growth to fit nature's environment and the market place**
- *Selection for growth only after maternal traits**
- *Conformation - do your buyers select for it, if so put the genetics that will reliably and consistently produce the conformation your buyers desire.**
- *Hybrid vigor, the free gift from Mother Nature, affects all traits**

After the basics, then we can fine tune the selection with the carcass traits that are desirable. Optimum carcass weights, yield grade, quality grade, and tenderness can be selected in a balanced approach.

On the horizon will be the breeding of disease resistant seedstock. The BVD-PI tests are just the beginning of identifying superior healthy animals. We look forward to the future but will always keep the basics front and center in our breeding program, while incorporating the new technology.

We thank you for your interest, friendship, and patronage over these many years and hope it will continue on for many more.

Chuck and Nancy Graff

GRAFF CATTLE

7 1/2 miles east of Ogallala
on Highway 30
(1/2 mile east of Roscoe)

**Sale Day Phone:
308-289-1579**

**Saturday February 2nd
1 pm MST**

Complimentary Lunch served at noon

Home Phone: 308-284-2444

Chuck's cell: 308-289-5841

Nancy's cell: 308-289-5842

Auctioneer

Kyle Schow (308) 289-3772

Ring Service

**Kevin Schow (308) 280-0340
Errol Nordhausen (308) 289-1247**

Announcements

All announcements from the auction block take precedence.

Terms & Conditions

Bulls sell under the accepted American Angus Association Sale terms and conditions.

**Free feeding till April 1st
and
Free Delivery**

All bulls will be fed by Graff and delivered within Nebraska and adjoining states at no charge to customers.

Please be aware that there is limited cell coverage at the place. For sale day bids or contact with Chuck on sale day, you will need to use the sale day phone number listed above!

Herd Health

Veterinary service by the Animal Clinic. All bulls have been tested and are guaranteed breeders. Herd health vaccination program recommendations have been followed.

All Graff Cattle sale bulls are virgin bulls.

Igenity's DNA BVD-PI samples are all negative!!

Sight Unseen Purchase Guarantee

Approval on delivery if you have purchased the bulls sight unseen with Chuck or you don't own them. If you can't make it to the sale on sale day please give any of us a call and we will gladly work with you to complete a sight unseen sale bid.

Volume Discount

Volume discount of 5% for purchase of 5 or more bulls.

Breeding Season Guarantee

All bulls sell with a first breeding season guarantee. The breeding season is defined as 90 days from the first day of turnout. Please see the inside back cover for details.

Lot 1 GRF Sculptor 7901

Registered Angus

BD: 01/16/07 HZ Black

BW	205 Adj Wt	365 Adj Wt	Adj.Scrotal	REA	Marbling
89	638	1194	38.5	13.1	5.1

Tenderness	Yield Grade	Quality Grade
7	Acceptable	Premium

Sire: Sculptor of Amen GC

BW	Wn	Yrlg	Milk
3.7	36	76	16

Dam's Sire: Connealy Frontline

BW	Wn	Yrlg	Milk
3.1	51	92	23

Proven optimum performance for generations coupled with outstanding carcass traits while balanced with strong maternal traits.



Lot 2



Lot 1

Lot 2 GRF Sculptor 7302

Registered Angus

BD: 01/28/07 HZ Black

BW	205 Adj Wt	365 Adj Wt	Adj.Scrotal	REA	Marbling
84	664	1158	33.9	14.8	5.9

Tenderness	Yield Grade	Quality Grade
7	Acceptable	Premium

Sire: Sculptor of Amen GC

BW	Wn	Yrlg	Milk
3.7	36	76	16

Dam's Sire: Bon View New Design 1407

BW	Wn	Yrlg	Milk
0	44	89	32

Added muscle and excellent carcass quality for topping the grid and CAB pricing! More dollar revenue for the owner of this bull's offspring.

Lot 3 GRF Sculptor 7211

3/4 Angus 1/4 Gelbvieh

BD: 02/6/07 HZ Black Polled

BW	205 Adj Wt	365 Adj Wt	Adj.Scrotal	REA	Marbling
88	762	1372	36.2	12.9	4.4

Tenderness	Yield Grade	Quality Grade
9	Acceptable	Preferred

Sire: Sculptor of Amen GC

BW	Wn	Yrlg	Milk
3.7	36	76	16

Dam's Sire: Leachman Go Man Go

BW	Wn	Yrlg	Milk
*2.0	*52	*82	*17

You can benefit from the individual excellence as well as the hybrid vigor from this top Sculptor son. Predictable & Reliable.



Lot 3

The asterisks for the Leachman Go Man Go sire mean that the results are estimated conversions to the Angus breed.

Lot 4 GRF Sculptor 7212

3/4 Angus 1/4 Gelbvieh

BD: 02/6/07 HZ Black Polled

BW	205 Adj Wt	365 Adj Wt	Adj.Scrotal	REA	Marbling
79	645	1222	36.2	13.5	4.4

Tenderness	Yield Grade	Quality Grade
7	Acceptable	Preferred

Sire: Sculptor of Amen GC

BW	Wn	Yrlg	Milk
3.7	36	76	16

Dam's Sire: Leachman Go Man Go

BW	Wn	Yrlg	Milk
*2.0	*52	*82	*17



Lot 4

Uniformity of Lots 3 and 4 you choose. They are at the top across the region in kind, performance, and quality.



Lot 5

Lot 6 GRF Sculptor 7313

7/8 Angus 1/8 Gelbvieh

BD: 01/27/07 HZ Black Polled

BW	205 Adj Wt	365 Adj Wt	Adj.Scrotal	REA	Marbling
83	655	1214	36.4	14.3	4.8

Tenderness	Yield Grade	Quality Grade
7	Acceptable	Acceptable

Sire: Sculptor of Amen GC

BW	Wn	Yrlg	Milk
3.7	36	76	16

Dam's Sire: Bon View New Design 878

BW	Wn	Yrlg	Milk
1.5	44	84	32

Lot 5 GRF Sculptor 7405

7/8 Angus 1/8 Gelbvieh

BD: 01/23/07 Black Polled

BW	205 Adj Wt	365 Adj Wt	Adj.Scrotal	REA	Marbling
87	645	1304	33.7	13.3	5.1

Tenderness	Yield Grade	Quality Grade
10	Preferred	Preferred

Sire: Sculptor of Amen GC

BW	Wn	Yrlg	Milk
3.7	36	76	16

Dam's Sire: Bon View New Design 1407

BW	Wn	Yrlg	Milk
0	44	89	34

Take a look at this powerful individual. His traits under the hide are just as tremendous for the branded beef programs.



Lot 6

The Sculptors are more complete and correct than any A.I. or natural herd sire we have ever utilized.

Lot 7 GRF Sculptor 7104

7/8 Angus 1/8 Gelbvieh

BD: 03/2/07 HZ Black Polled

BW	205 Adj Wt	365 Adj Wt	Adj.Scrotal	REA	Marbling
89	751	1267	38.2	16.4	4.4

Tenderness	Yield Grade	Quality Grade
10	Acceptable	Premium

Sire: Sculptor of Amen GC

BW	Wn	Yrlg	Milk
3.7	36	76	16

Dam's Sire: Bon View New Design 878

BW	Wn	Yrlg	Milk
1.5	44	84	32



Lot 7

This cow has never missed in excelling in production. Maternal brother was sale topper in 2006. Note the carcass traits, its safe to bet the carcass traits are among the best in the beef industry. If a registered bull, he'd be valued at a section grass ground but as a hybrid bull, a fraction of the cost to you.



Lot 8

Lot 9 GRF Sculptor 7208

7/8 Angus 1/8 Gelbvieh

BD: 01/19/07 HZ Black Polled

BW	205 Adj Wt	365 Adj Wt	Adj.Scrotal	REA	Marbling
89	665	1107	34.6	13.0	4.3

Tenderness	Yield Grade	Quality Grade
7	Acceptable	Preferred

Sire: Sculptor of Amen GC

BW	Wn	Yrlg	Milk
3.7	36	76	16

Dam's Sire: Leachman Go Man Go

BW	Wn	Yrlg	Milk
*2.0	*52	*82	*17



Lot 9

Lot 8 GRF Sculptor 7508

15/16 Angus 1/16 Gelbvieh

BD: 02/12/07 HZ Black Polled

BW	205 Adj Wt	365 Adj Wt	Adj.Scrotal	REA	Marbling
90	682	1241	38.5	15.4	5.7

Tenderness	Yield Grade	Quality Grade
9	Acceptable	Preferred

Sire: Sculptor of Amen GC

BW	Wn	Yrlg	Milk
3.7	36	76	16

Dam's Sire: Stevenson American Idol

BW	Wn	Yrlg	Milk
0	33	64	29

Talk about production and out of a first calf heifer! The Sculptors are about a 3 day shorter gestation length than the average Angus.

Balance, style, and predictability are bred into this bull. His mother is a moderate sized beef cow with added volume.

SCULPTOR OF AMEN GC

While attending the National Western in January of 2006, I bumped into Chuck Graff and his opening greeting was “Dr. Long, I’ve found a bull that fits your ideal for body composition, structure and soundness”. I trust Chuck so George Goebel from Pleasant Ridge Stock Farm in Iowa and I rented a car and headed east to Amen Angus Ranch. Wow! I was not disappointed. There was a trim, clean heavily muscled, yearling just off gain test. This bull knew how to walk and with style. His performance was good – his pedigree was sound – I really liked him. When I saw the bull’s mother, I was pleased to see a trim, clean, old cow still sound as a dollar. Best of all was her consistent and good production record. While we were there, Chuck bought an interest and possession in the bull for a sizeable amount.

I was so enthusiastic about this bull that George bought an interest from Chuck as well as the bull’s mother and two maternal sisters from Amen Angus. I was very pleased that these owners allowed me to name the bull. I suggested “SCULPTOR” because I sincerely believe that a bull with this kind of body composition will be able to design trim, clean heavily muscled progeny that the Angus breed needs to put a higher percentage of cattle in the top end of the grid.

Chuck tells me that SCULPTOR’S first calves have been what he hoped for and George says the bull’s calves at Pleasant Ridge are the best among those from top rated AI sires. The ultrasound data is excellent in both herds and an extra bonus is the extremely good tenderness scores the biotechnologists have given SCULPTOR and his progeny.

I think SCULPTOR is a breed improver.

Dr. Robert A. Long

Lot 10 GRF Sculptor 7170

3/4 Angus 1/4 Gelbvieh

BD: 02/16/07 HZ Black Polled

BW	205 Adj Wt	365 Adj Wt	Adj. Scrotal	REA	Marbling
78	697	1242	37.6	16.5	4.6

Tenderness	Yield Grade	Quality Grade
9	Acceptable	Premium

Sire: Sculptor of Amen GC

BW	Wn	Yrlg	Milk
3.7	36	76	16

Dam’s Sire: Connealy Dateline

BW	Wn	Yrlg	Milk
1.2	38	74	11

Longevity on the cow side is proven with this bull. Fertility and production year after year.

Lot 11 GRF Sculptor 7502

7/8 Angus 1/8 Gelbvieh

BD: 02/2/07 HZ Black Polled

BW	205 Adj Wt	365 Adj Wt	Adj. Scrotal	REA	Marbling
88	609	1120	32.2	11.4	3.6

Tenderness	Yield Grade	Quality Grade
9	Acceptable	Premium

Sire: Sculptor of Amen GC

BW	Wn	Yrlg	Milk
3.7	36	76	16

Dam’s Sire: P V F New Horizon

BW	Wn	Yrlg	Milk
3.8	57	104	27

New Horizon goes back to B/R New Design 323 and probably gave more pounds of weaning weight than his famous ancestors.

Note: Dr. Long is one of the leaders in beef performance and cattle breeding science and especially in carcass evaluation of live cattle. I first heard of Dr. Long 40 years ago when he was hired by Armour to train their cattle buyers on yield grade buying. I was fortunate to have worked for him at the old Ankony Angus. - Chuck

Lot 12 GRF Sculptor 7410

13/16 Angus 3/16 Gelbvieh

BD: 02/22/07 HZ Black Polled

BW	205 Adj Wt	365 Adj Wt	Adj.Scrotal	REA	Marbling
88	617	1119	35.3	13.3	4.0

Tenderness	Yield Grade	Quality Grade
7	Acceptable	Preferred

Sire: Sculptor of Amen GC

BW	Wn	Yrlg	Milk
3.7	36	76	16

Dam's Sire: Apache Warrior

GV	BW	Wn	Yrlg	Milk
	-1.8	30	67	22



Sculptor as a yearling after the breeding season

Easy to look at and keep you in business.
Thick and moderate framed individual!

Sculptor – Optimum performance, structural soundness and loaded with carcass traits of tenderness, quality grade and yield grade. His sire J239 is a son of Precision E161 and out of EXT's dam. Sculptor's dam is a daughter of 2RT2 (the female sire at Select Sires) and has a calving interval of 364 days on 7 AI sired calves. She has an IMF ratio of 112 and REA ratio of 111.

Lot 13 GRF Sculptor 7412

3/4 Angus 1/4 Gelbvieh

BD: 02/10/07 HZ Black Polled

BW	205 Adj Wt	365 Adj Wt	Adj.Scrotal	REA	Marbling
83	616	1084	35.4	13.2	5.3

Tenderness	Yield Grade	Quality Grade

Sire: Sculptor of Amen GC

BW	Wn	Yrlg	Milk
3.7	36	76	16

Dam's Sire: Apache Warrior

GV	BW	Wn	Yrlg	Milk
	-1.8	30	67	22

Brothers that look alike and similar in kind. DNA sample is being retaken and results are pending.

With the present and future grain situation coupled with consumer beef eating likes cattle producers need to be diligent in selecting moderate framed cattle that are productive and fertile in range situations, convert efficiently for the feedlot and demand the higher grid carcass dollars.

Lot 14 GRF Sculptor 7413

3/4 Angus 1/4 Gelbvieh

BD: 02/11/07 HZ Black Polled

BW	205 Adj Wt	365 Adj Wt	Adj.Scrotal	REA	Marbling
85	624	1106	34.9	11.6	4.5

Tenderness	Yield Grade	Quality Grade
7	Acceptable	Preferred

Sire: Sculptor of Amen GC

BW	Wn	Yrlg	Milk
3.7	36	76	16

Dam's Sire: Apache Warrior

GV	BW	Wn	Yrlg	Milk
	-1.8	30	67	22

An athletic and smooth easy calving bull.

Lot 15 GRF Foresight 7312

3/4 Angus 1/4 Gelbvieh

BD: 01/24/07 HZ Black Polled

BW	205 Adj Wt	365 Adj Wt	Adj.Scrotal	REA	Marbling
86	652	1246	34.8	14.0	5.0

Tenderness	Yield Grade	Quality Grade
7	Acceptable	Acceptable

Sire: Woodhill Foresight

BW	Wn	Yrlg	Milk
4	63	105	27

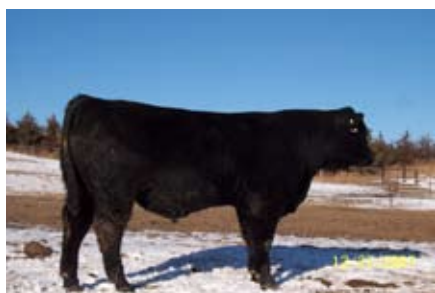
Dam's Sire: Leachman Go Man Go

BW	Wn	Yrlg	Milk
*2	*52	*82	*17



Lot 15

Style, muscle, and correctness in this bull but you would expect it with his dam and sire. He should sire excellent females.



Lot 16

Lot 16 GRF Foresight 7814

3/4 Angus 1/4 Gelbvieh

BD: 01/21/07 HZ Black Polled

BW	205 Adj Wt	365 Adj Wt	Adj.Scrotal	REA	Marbling
91	669	1202	36.2	12.6	44.7

Tenderness	Yield Grade	Quality Grade
9	Acceptable	Preferred

Sire: Woodhill Foresight

BW	Wn	Yrlg	Milk
4	63	105	27

Dam's Sire: Connealy Dateline

BW	Wn	Yrlg	Milk
1.2	38	74	11

Lot 17 GRF Legacy 7409

3/4 Angus 1/4 Gelbvieh

BD: 01/26/07 HZ Black Polled

BW	205 Adj Wt	365 Adj Wt	Adj.Scrotal	REA	Marbling
82	672	1232	33.7	13.3	4.2

Tenderness	Yield Grade	Quality Grade
6	Acceptable	Acceptable

Sire: Beartooth Legacy

BW	Wn	Yrlg	Milk

Dam's Sire: Apache Warrior

GV	BW	Wn	Yrlg	Milk
	-1.8	30	67	22



Lot 17

Foresight the sire has been utilized in many of the top Angus herds due to his carcass traits. A little more frame in this bull for those wishing to add some more frame and yet remain a 7 on frame.

View this headliner. Legacy topped Beartooth's dispersal, was the top selling bull in the sale, and is Precision 1680 and Right Time breeding. Warrior daughters are producers!

Lot 18 GRF Idol 7504

15/16 Angus 1/16 Gelbvieh

BD: 01/23/07 HZ Black Polled

BW	205 Adj Wt	365 Adj Wt	Adj.Scrotal	REA	Marbling
81	667	1160	33.7	11.9	4.9

Tenderness	Yield Grade	Quality Grade
7	Acceptable	Preferred

Sire: Stevenson American Idol

BW	Wn	Yrlg	Milk
0	33	64	29

Dam's Sire: Hyline Right Time 338

BW	Wn	Yrlg	Milk
3.9	60	106	32



Lot 19

Lots 18, 19, and 20 are out of 2 year olds and higher in Angus percentages. You will like the American Idols.

Stevenson American Idol - Calving ease, maternal traits for milk along with desirable carcass traits stemming from Future Direction and Rainmaker 540. Commercial cattlemen are quite pleased with this outcross to many New Design, EXT and Precision bred cattle.

Lot 20 GRF Idol 7506

15/16 Angus 1/16 Gelbvieh

BD: 01/28/07 HZ Black Scurred

BW	205 Adj Wt	365 Adj Wt	Adj.Scrotal	REA	Marbling
77	658	1108	35.9	13.6	3.9

Tenderness	Yield Grade	Quality Grade
6	Acceptable	Preferred

Sire: Stevenson American Idol

BW	Wn	Yrlg	Milk
0	33	64	29

Dam's Sire: OCC Bonanza

BW	Wn	Yrlg	Milk
3	37	72	25

Lot 19 GRF Idol 7505

15/16 Angus 1/16 Gelbvieh

BD: 01/28/07 HZ Black Polled

BW	205 Adj Wt	365 Adj Wt	Adj.Scrotal	REA	Marbling
77	687	1121	34.9	14.5	4.1

Tenderness	Yield Grade	Quality Grade
7	Preferred	Preferred

Sire: Stevenson American Idol

BW	Wn	Yrlg	Milk
0	33	64	29

Dam's Sire: Hyline Right Time 338

BW	Wn	Yrlg	Milk
3.9	60	106	32

Could your replacements benefit from having the milking genetic power of these half brothers?

Woodhill Foresight –Sire of Lots 15 & 16 - The ABS bull with excellent end product growth traits. Note Woodhill Foresight and Apache Warrior are paternal brothers sired by Papa Forte. Foresight is also a maternal brother to Bon View New Design 878.

There was a powerful set of American Idol sired calves that topped Ogallala's feeder sale in December to a repeat buyer that feeds thousands of cattle. They work.

Lot 21 GRF Warrior 7914

1/2 Angus 1/2 Gelbvieh

BD: 02/25/07 Black Polled

BW	205 Adj Wt	365 Adj Wt	Adj.Scrotal	REA	Marbling
88	776	1246	39.0	16.1	4.0

Tenderness	Yield Grade	Quality Grade
4	Preferred	Acceptable

Sire: Apache Warrior

BW	Wn	Yrlg	Milk
-1.8	30	67	22

Dam's Sire: Connealy Dateline

BW	Wn	Yrlg	Milk
1.2	38	74	11



Lot 21

A true F2 hybrid. A 7 frame bull from an excellent producing Dateline daughter. He'll add pounds to your weaning and yearling weights.



Lot 22

Lot 23 GRF Warrior 7403

3/8 Angus 5/8 Gelbvieh

BD: 03/5/07 HZ Black Polled

BW	205 Adj Wt	365 Adj Wt	Adj.Scrotal	REA	Marbling
91	700	1238	36.3	12.7	3.6

Tenderness	Yield Grade	Quality Grade
3	Preferred	Acceptable

Sire: Apache Warrior

BW	Wn	Yrlg	Milk
-1.8	30	67	22

Dam's Sire: Bon View New Design 1407

BW	Wn	Yrlg	Milk
0	44	89	34

Lot 22 GRF Warrior 7317

5/8 Angus 3/8 Gelbvieh

BD: 02/23/07 HZ Black Polled

BW	205 Adj Wt	365 Adj Wt	Adj.Scrotal	REA	Marbling
91	779	1220	36.9	11.8	4.0

Tenderness	Yield Grade	Quality Grade
4	Preferred	Acceptable

Sire: Apache Warrior

BW	Wn	Yrlg	Milk
-1.8	30	67	22

Dam's Sire: RTBG Bulls Eye

BW	Wn	Yrlg	Milk
0.5	41	92	20

The Warriors have ruggedness to take whatever environment they are placed in. Strong performance.

Value of composites
Angus/Gelbvieh Composite cattle have the best blending of both breeds which allows for uniformity, added vigor, increased longevity, better disease resistance, and efficiency in feed conversion. The end results are leaner carcasses that grade choice and having the maternal traits maintained in replacement females.

Younger and shows good performance.

Lot 24 GRF Warrior 7202

5/8 Angus 3/8 Gelbvieh

BD: 03/31/07 HZ Black Polled

BW	205 Adj Wt	365 Adj Wt	Adj.Scrotal	REA	Marbling
92	748	1205	35.3	13.3	5.0

Tenderness	Yield Grade	Quality Grade
6	Preferred	Acceptable

Sire: Apache Warrior

BW	Wn	Yrlg	Milk
-1.8	30	67	22

Dam's Sire: Bon View New Design 878

BW	Wn	Yrlg	Milk
1.5	44	84	32



Apache Warrior

Apache Warrior – The balancer bull for moderating frame, good doing offspring. Graff Cattle selected Apache because of his sire and dam. After 4 years of pleasing offspring, the possession was sold to the Pearson Ranch in SD for their balancer herd sire.

Take note to Lot 27 as this bull looks very similar to Lot 27 a year ago. Don't overlook lot 24. He is out of an excellent cow!

Lot 25 GRF Warrior 7416

5/8 Angus 3/8 Gelbvieh

BD: 02/23/07 HZ Black Polled

BW	205 Adj Wt	365 Adj Wt	Adj.Scrotal	REA	Marbling
84	629	1092	31.6	12.4	4.6

Tenderness	Yield Grade	Quality Grade
6	Preferred	Preferred

Sire: Apache Warrior

BW	Wn	Yrlg	Milk
-1.8	30	67	22

Dam's Sire: OCC Joker

BW	Wn	Yrlg	Milk
1.9	30	49	14

Joker sires moderate frames as he goes back to Anchor and 6807.

Lot 26 GRF Warrior 7171

3/4 Angus 1/4 Gelbvieh

BD: 02/11/07 HZ Black Polled

BW	205 Adj Wt	365 Adj Wt	Adj.Scrotal	REA	Marbling
72	632	1102	36.6	13.5	4.7

Tenderness	Yield Grade	Quality Grade

Sire: Apache Warrior

BW	Wn	Yrlg	Milk
-1.8	30	67	22

Dam's Sire: Connealy Dateline

BW	Wn	Yrlg	Milk
1.2	38	74	11

Proven dam with longevity! This bull has a moderate frame and large testicles for his age! DNA results pending.



Lot 27

Lot 27 GRF Warrior 6206

1/2 Angus 1/2 Gelbvieh

BD: 03/12/06 Black Scurred

BW	205 Adj Wt	365 Adj Wt	Adj.Scrotal	REA	Marbling
91	730	1225	38	15.2	4.6

Tenderness	Yield Grade	Quality Grade
4	Preferred	Preferred

Sire: Apache Warrior

BW	Wn	Yrlg	Milk
-1.8	30	67	22

Dam's Sire: Bon View New Design 878

BW	Wn	Yrlg	Milk
1.5	44	84	32

This bull and his performance speak volumes. He was held back at our storm stressed sale last year because we believed him to be one of the best and he was the youngest bull in last year's listing. Yearling data was from last year's data collection.

Lot 28 Integrity 6802

Registered Angus

BD: 10/02/06 HZ Black

BW	205 Adj Wt	365 Adj Wt	Adj.Scrotal	REA	Marbling
84	NA	NA	34.6	12.2	5.0

Tenderness	Yield Grade	Quality Grade
9	Acceptable	Acceptable

Sire: G A R Integrity

BW	Wn	Yrlg	Milk
0.7	28	59	25

Dam's Sire: Ideal 5411 of 1418

BW	Wn	Yrlg	Milk
4.8	54	99	15



Lot 28

Registered Angus. Integrity is a top semen seller at Select Sires. The dam of Integrity is a featured donor cow in the Baldrige and Gardiner herds.

Herd Feeding Program

Cows are calved at Roscoe and Al'd in April and early May on cool season grass. In 2007 Sculptor was the service sire for the balance of May and June. Cows and calves go to Arthur County the end of May for summer grazing. Calves receive no creep. August is preconditioning and weaning time. Bull calves have been on Purina's Limited 70/30 Accuration with free choice of grass hay. Heifer calves run on cool season aftergrowth till the snow flies or sometime in January. Cows have remained on grass in Arthur County till cornstalks are available in the valley for grazing until early January and then receive hay and the cycle starts again.



For those selling finished cattle on the grid, the carcass information provided is of value in your selections. The REA and Marbling figures are the result of ultrasounding by Sandhills Ultrasound. (For rough interpretation, a 4 will grade choice). The higher the number the more marbling. Through DNA testing markers have been identified for carcass traits. Those reported are based on Igenity's tissue DNA sample reading. More accuracy and markers will be needed before ultrasounding can be eliminated. The most identifiable and worked with DNA marker is tenderness. The possible scores for tenderness range from 1 to 10 with 10 being the most tender. The yield grade and quality grade balancing is somewhat more objective. One must keep in mind the bull's traits as well as his sisters' traits that are out on the range, be it grass or cornstalks and/or hay.

The following is Graff's interpretation based on combination of Igenity's numerous scores.

Yield Grade

unacceptable
acceptable
preferred
unacceptable

Characteristics

Poor fleshing ability YG 1
YG 2 to YG 3.4
YG 2
YG is higher than 3.5

Quality Grade

premium
preferred
acceptable
unacceptable

prime
top 2/3 of choice, CAB eligible
lower 1/2 of choice
select

There is not a 100% agreement between ultrasound and the identified DNA marker but one can see a definite correlation.

Breeding Season Guarantee

Please notify Graff of claims as soon as possible or before Sept 15, 2008. Bulls injured the first 30 days will be replaced or buyer receives full credit less salvage. Bulls injured after 30 days turnout, the buyer will receive the salvage plus ½ the difference between purchase and salvage value. Death and injury due to negligence or willful mistreatment are not covered.

**Thank you for your friendship,
thank you for your patronage,
thank you to all of our military servicemen and women,
and thank you for that wonderful item on the table
called BEEF- It's what's for dinner!**

**Bulls are available any time for viewing at Graff Cattle.
Stop in and check them out!**

See you at the sale!!

Saturday Feb. 2, 2008
1 p.m. MST

Sale to be held 7.5 miles east of Ogallala On Hwy 30 which is north of the Roscoe / I-80 exit

Optimum Performance
Structural Soundness
Maternal Traits
Carcass Evaluation
Breeding Season Guarantee
DNA Trait Tested
Free Feeding til April 1st
Free Delivery
Virgin Bulls
BVD-PI Negative

Graff Cattle
550 Fox Hill
Ogallala NE 69153